
Introduction to Bioinformatics using NGS data, November 25-29, Lund

SciLifeLab: a brief introduction

Dag Ahrén



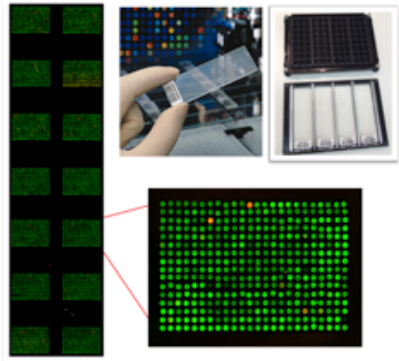


- Established in **2010**
- National resource since **2013**
- More than **1200** researchers



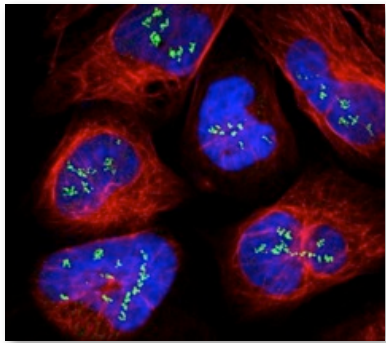
To be a national hub for **molecular life sciences**





Unique infrastructure

- Service to research community
- Technology development
- Education



Internationally leading research

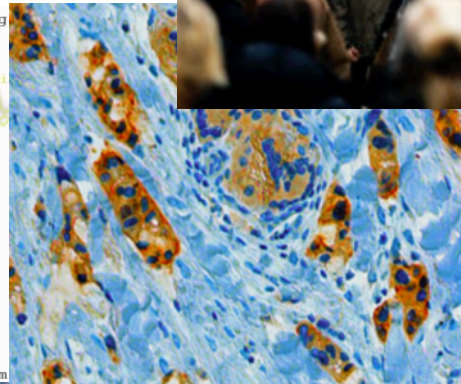
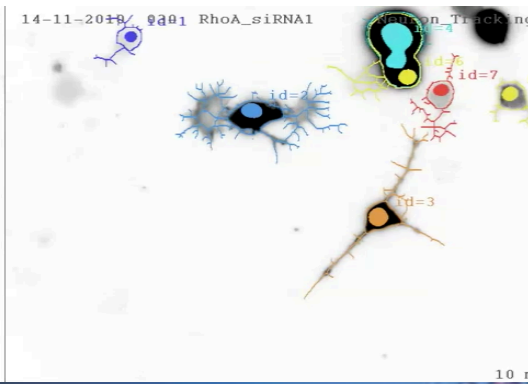
- Strong interdisciplinary community
- SciLifeLab Fellows Program
- National projects



Societal benefits

- Health care outcome
- Environment
- Tech transfer, spin-offs, industry collaborations

The range of life sciences studied



- Ecosystems
- Communities
- Populations
- Organisms
- Organs
- Tissues
- Cells
- Organelles
- Molecules

INFRASTRUCTURE SERVICES

Infrastructure units A-Z

Genomics

Proteomics

Metabolomics

Single Cell Biology

Bioimaging and Molecular Structure

Chemical Biology and Genome Engineering

Drug Discovery

Diagnostics

Bioinformatics

SciLifeLab has been created by the coordinated effort of four universities in Stockholm and Uppsala: Stockholm University, Karolinska Institutet, KTH Royal Institute of Technology and Uppsala University.



Nodes and sites



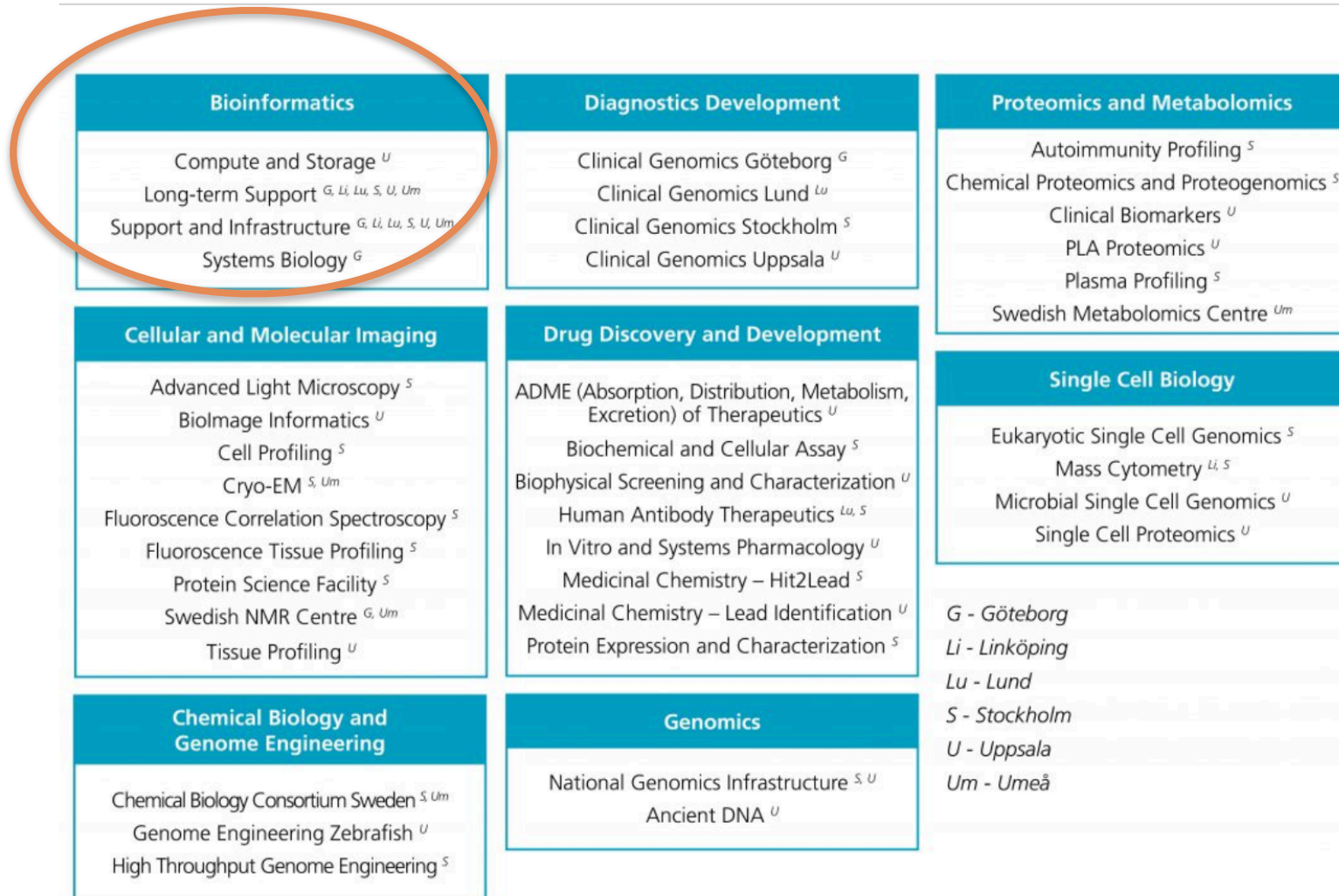
Uppsala node



Stockholm node (Solna)



Infrastructure organization



NBIS

NATIONAL BIOINFORMATICS
INFRASTRUCTURE SWEDEN

NBIS is a distributed national bioinformatics infrastructure, supporting life sciences in Sweden



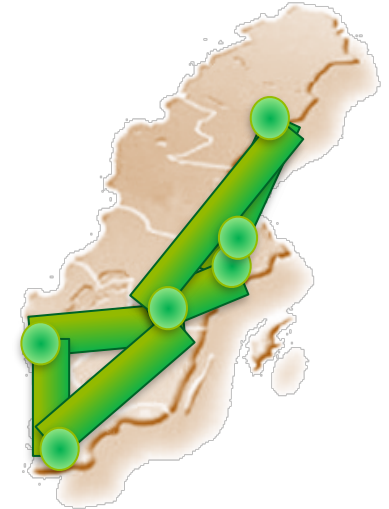
Bioinformatics is needed to be able to analyse the huge amount of information coming from Genomics, Proteomics and Metabolomics data at different levels (cellular, tissues, organisms).

User access to NBIS

- Study design consultation
- Short & medium-term support
- 800 SEK/hour
- <http://www.nbis.se/support/supportform/index.php>
- Apply anytime

- Long-term support (500h; free: scientific evaluation)
<http://www.scilifelab.se/facilities/wabi/>
- Several deadlines per year.

- Compute and storage (free; majority of hardware and system administration belongs to SNIC)
- Apply: <https://supr.snic.se>
- Read more: <http://www.uppmax.uu.se/>



- Are you planning a project and need someone to discuss the bioinformatics analysis with?
- Do you need bioinformatics support, but do not know who to turn to?
- Are you stuck in your own bioinformatics project and need help?
- Meet the NBIS staff at bioinformatics drop-in

Lund

When: Weekly on Wednesdays
at 10-ca 11:30 am

Where:

Even weeks at Medicon Village
Odd weeks at Biology Building

Stockholm

When: Weekly on Tuesdays
at 10.30-11.30 am

Where: SciLifeLab, lunch room, level 2

Upcoming SciLifeLab courses

Course	Location
Introduction to bioinformatics using NGS data, January 27-31, 2020	Stockholm
Single cell genomics - a practical and theoretical workshop, March 4-6, 2020	Uppsala
Introduction to bioinformatics using NGS data, April 20-24, 2020	Linköping
Cryo-EM sample preparation and data collection, June 2-4, 2020	Umeå

A new teaching model, where PhD students get a senior bioinformatician as a personal advisor during 2 years of their PhD.

Monthly project meetings + two grand meetings per year to aid networking and knowledge transfer.

First call late 2014:

>50 applicants for 15 places

Last call in 2017

>93 applicants for 15 - 18 places

www.scilifelab.se/education/mentorship/the-swedish-bioinformatics-advisory-program/

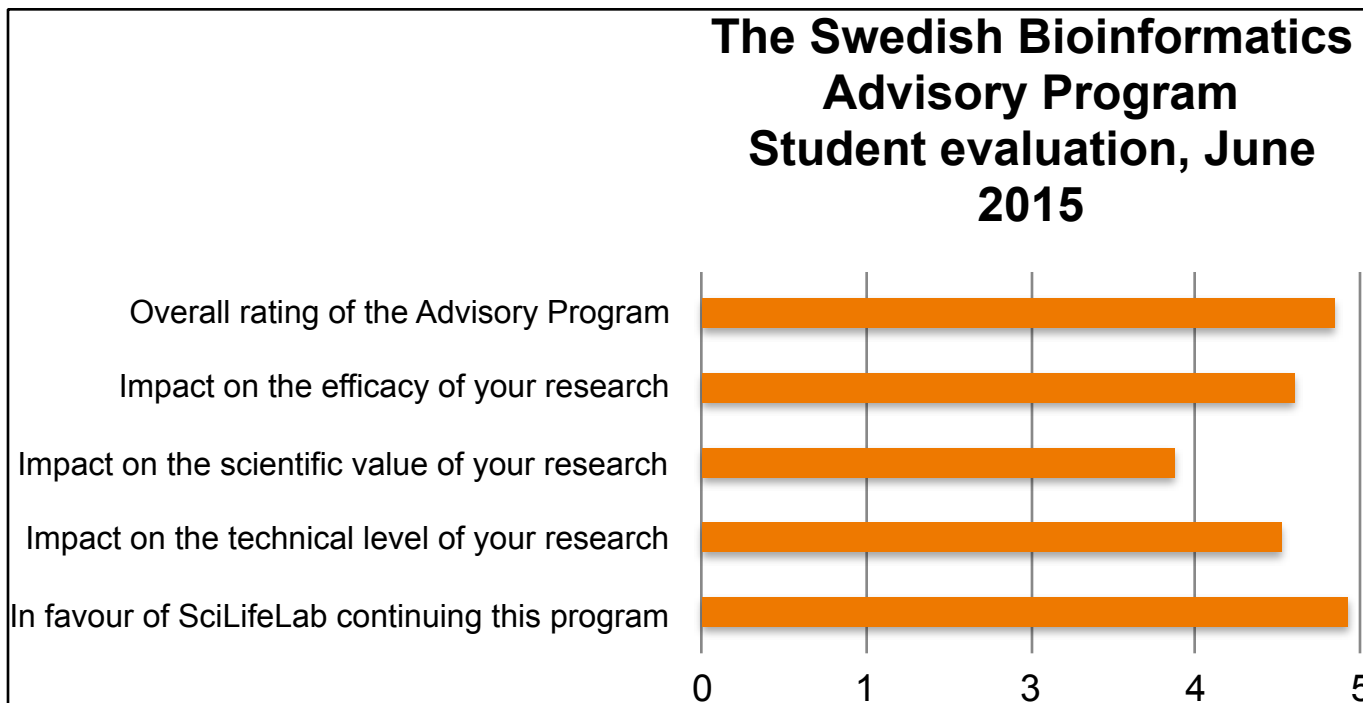
The application for 2019/2020 is closed

Why this program

Overall aim: Great research in Sweden!

How? Strategic investment in PhD education
Complementing PhD supervisors with technical expertise
Catalyze transition to large-scale data analyses

The PhD student is responsible to prepare and drive the meetings!



Attendance list

- Please sign this list every day

Coffee breaks and lunches for those who chose to join the social program

- Lunch at Restaurant Moroten & Piskan
- Coffee breaks outside the lecture room

Course dinner for those who chose to join the social program

- Tuesday November 26 at 18:00, Restaurant Kulturen
- Sign the list before lunch today, if you intend to join or not
- Included: Main course, dessert and one drink

SciLifeLab



Stockholms
universitet



UPPSALA
UNIVERSITET

www.scilifelab.se

Practical questions to:
Maria Bäckström
Coordinator
education@scilifelab.uu.se
072 9999 269

